

## Uitgereikte groenestroomcertificaten per maand en per provincie, opgesplitst per energiebron

Dit document bevat de gegevens per provincie betreffende het aantal toegekende groenestroomcertificaten voor elektriciteit uit hernieuwbare energiebronnen per maand, opgesplitst per hernieuwbare energiebron. Deze gegevens zijn voorlopig en kunnen nog worden aangepast. De meest recente voorbije maanden zijn in de toekomst zeer waarschijnlijk nog aan significante aanpassingen onderhevig, aangezien hiervoor nog niet alle meetgegevens door de VREG zijn ontvangen en/of verwerkt.

### Uitgereikte groenestroomcertificaten per maand en per provincie voor elektriciteitsproductie uit zonne-energie

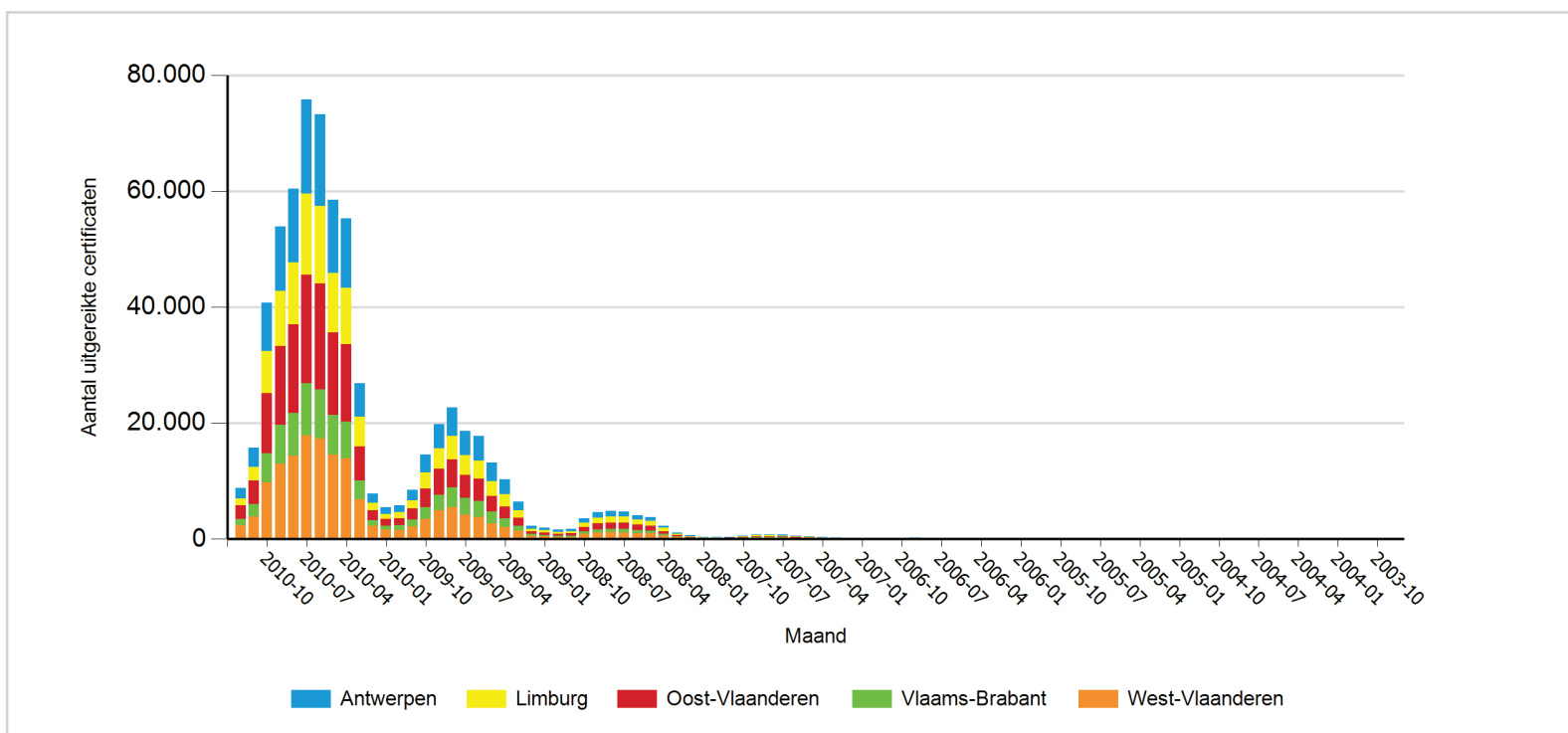
	Antwerpen	Limburg	Oost-Vlaanderen	Vlaams-Brabant	West-Vlaanderen	Totaal
<b>2010-12</b>	1.787	1.183	2.312	1.080	2.410	8.772
<b>2010-11</b>	3.253	2.406	4.044	2.191	3.839	15.733
<b>2010-10</b>	8.339	7.244	10.279	5.045	9.792	40.699
<b>2010-09</b>	11.162	9.490	13.523	6.784	12.931	53.890
<b>2010-08</b>	12.723	10.608	15.285	7.402	14.356	60.374
<b>2010-07</b>	16.241	13.972	18.750	8.988	17.837	75.788
<b>2010-06</b>	15.848	13.341	18.311	8.400	17.355	73.255

	Antwerpen	Limburg	Oost-Vlaanderen	Vlaams-Brabant	West-Vlaanderen	Totaal
2010-05	12.543	10.310	14.194	6.787	14.615	58.449
2010-04	12.044	9.695	13.343	6.292	13.926	55.300
2010-03	5.751	5.154	5.843	3.243	6.841	26.832
2010-02	1.582	1.346	1.691	980	2.261	7.860
2010-01	1.155	842	1.241	645	1.609	5.492
2009-12	1.172	1.017	1.254	803	1.562	5.808
2009-11	1.806	1.448	1.880	1.194	2.175	8.503
2009-10	3.122	2.767	3.221	2.027	3.422	14.559
2009-09	4.183	3.495	4.529	2.696	4.931	19.834
2009-08	4.915	4.094	4.828	3.334	5.537	22.708
2009-07	4.201	3.376	4.013	2.823	4.232	18.645
2009-06	4.214	3.101	3.821	2.834	3.770	17.740
2009-05	3.205	2.566	2.621	2.073	2.688	13.153
2009-04	2.538	2.191	2.049	1.433	2.092	10.303
2009-03	1.434	1.271	1.381	841	1.481	6.408
2009-02	497	476	480	254	599	2.306
2009-01	419	445	393	241	472	1.970
2008-12	358	329	354	220	367	1.628
2008-11	388	382	361	233	372	1.736
2008-10	674	767	756	473	861	3.531
2008-09	966	986	1.059	577	1.102	4.690
2008-08	989	1.034	1.069	586	1.179	4.857
2008-07	923	1.076	1.000	631	1.147	4.777
2008-06	765	938	937	514	1.005	4.159
2008-05	684	871	860	449	958	3.822

	Antwerpen	Limburg	Oost-Vlaanderen	Vlaams-Brabant	West-Vlaanderen	Totaal
2008-04	423	540	465	279	633	2.340
2008-03	170	269	179	142	325	1.085
2008-02	120	122	104	59	239	644
2008-01	66	74	51	35	127	353
2007-12	72	67	84	47	108	378
2007-11	71	61	92	34	127	385
2007-10	146	100	112	78	194	630
2007-09	168	141	138	72	295	814
2007-08	164	145	143	76	297	825
2007-07	147	132	103	82	280	744
2007-06	163	117	113	74	132	599
2007-05	109	50	92	80	99	430
2007-04	99	55	71	67	93	385
2007-03	43	31	48	36	56	214
2007-02	23	6	27	10	29	95
2007-01	15	5	26	14	24	84
2006-12	7	8	11	6	16	48
2006-11	17	20	25	14	28	104
2006-10	45	18	39	19	29	150
2006-09	48	19	59	30	51	207
2006-08	45	20	50	16	33	164
2006-07	51	21	50	13	44	179
2006-06	46	19	36	14	41	156
2006-05	31	10	37	15	26	119
2006-04	30	7	22	3	16	78

	Antwerpen	Limburg	Oost-Vlaanderen	Vlaams-Brabant	West-Vlaanderen	Totaal
2006-03	22	6	15	14	19	76
2006-02	18	3	5	4	9	39
2006-01	14	4	5	5	8	36
2005-12	15	2	12	4	8	41
2005-11	14	3	8	4	9	38
2005-10	19	7	21	12	17	76
2005-09	34	13	21	10	22	100
2005-08	34	7	27	8	24	100
2005-07	32	10	25	7	24	98
2005-06	31	13	14	11	22	91
2005-05	19	8	13	7	15	62
2005-04	6	4	3	4	9	26
2005-03	12	4	11	2	8	37
2005-02	6	4	3	3	6	22
2005-01	3	4	6	4	7	24
2004-12	5	0	4	2	6	17
2004-11	9	3	3	4	9	28
2004-10	16	2	10	4	13	45
2004-09	13	8	9	4	8	42
2004-08	14	7	10	2	14	47
2004-07	8	7	10	6	10	41
2004-06	21	3	8	5	13	50
2004-05	19	6	10	5	10	50
2004-04	8	5	3	5	11	32
2004-03	4	5	3	2	3	17

	Antwerpen	Limburg	Oost-Vlaanderen	Vlaams-Brabant	West-Vlaanderen	Totaal
2004-02	4	2	0	1	3	10
2004-01	3	3	4	1	2	13
2003-12	0	0	0	1	3	4
2003-11	7	2	1	3	1	14
2003-10	0	2	2	0	2	6
2003-09	1	0	0	0	0	1



Aantal uitgereikte groenestroomcertificaten per provincie per technologie

## Uitgereikte groenestroomcertificaten per maand en per provincie voor elektriciteitsproductie uit windenergie op land

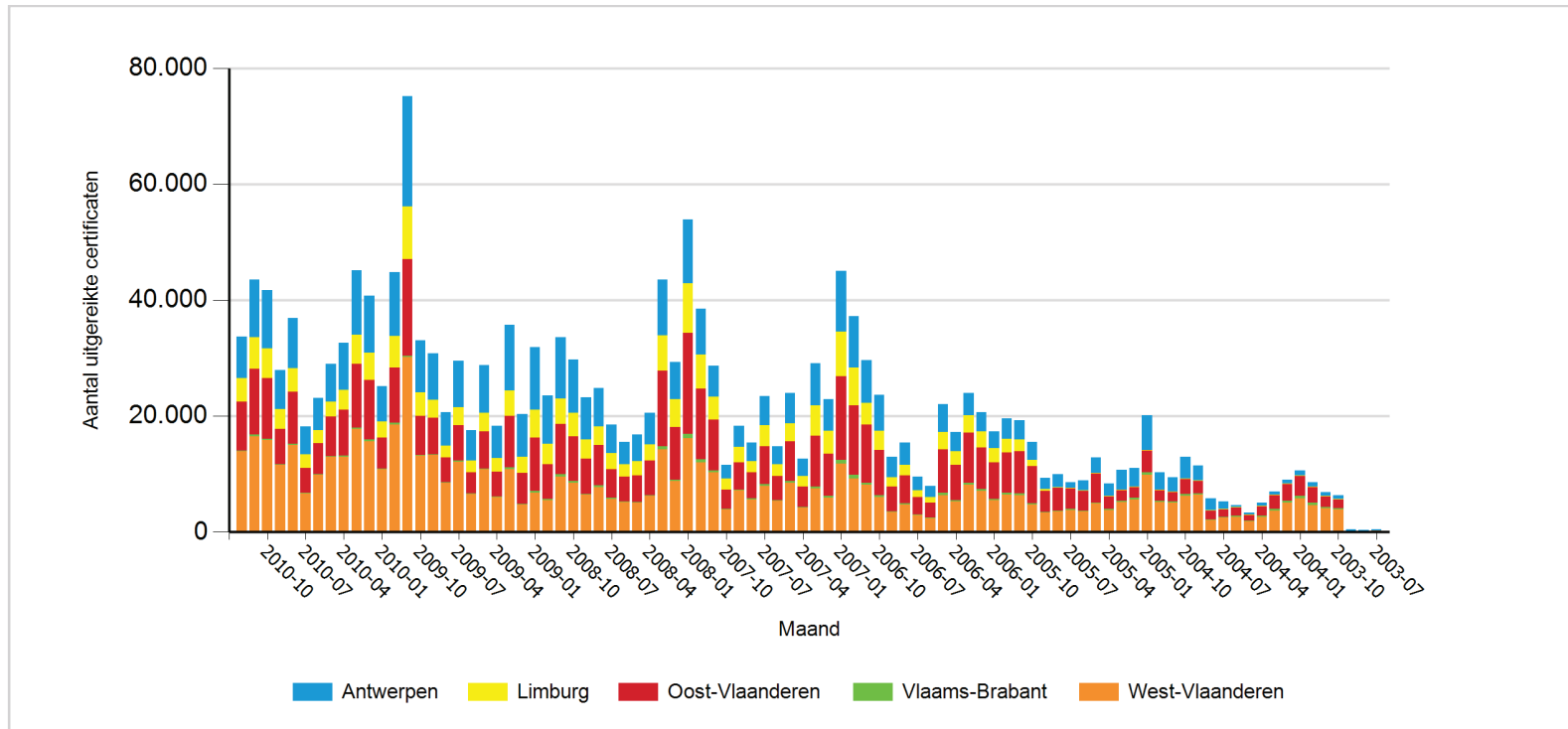
	Antwerpen	Limburg	Oost-Vlaanderen	Vlaams-Brabant	West-Vlaanderen	Totaal
<b>2010-12</b>	7.148	4.097	8.366	88	13.972	33.671
<b>2010-11</b>	9.925	5.456	11.306	289	16.545	43.521
<b>2010-10</b>	10.025	5.173	10.385	225	15.877	41.685
<b>2010-09</b>	6.803	3.365	6.124	122	11.543	27.957
<b>2010-08</b>	8.669	4.051	9.016	208	14.961	36.905
<b>2010-07</b>	4.795	2.294	4.320	114	6.640	18.163
<b>2010-06</b>	5.549	2.322	5.313	109	9.848	23.141
<b>2010-05</b>	6.520	2.601	6.843	135	12.923	29.022
<b>2010-04</b>	8.070	3.474	7.903	162	13.021	32.630
<b>2010-03</b>	11.056	5.054	10.991	242	17.759	45.102
<b>2010-02</b>	9.904	4.685	10.258	250	15.684	40.781
<b>2010-01</b>	6.126	2.793	5.318	90	10.866	25.193
<b>2009-12</b>	10.978	5.474	9.570	294	18.510	44.826
<b>2009-11</b>	18.992	9.149	16.626	254	30.150	75.171
<b>2009-10</b>	9.038	3.992	6.776	114	13.174	33.094
<b>2009-09</b>	7.987	3.111	6.290	173	13.273	30.834
<b>2009-08</b>	5.765	2.087	4.245	101	8.515	20.713
<b>2009-07</b>	8.070	3.040	6.046	215	12.165	29.536
<b>2009-06</b>	5.249	2.093	3.596	119	6.536	17.593
<b>2009-05</b>	8.211	3.173	6.391	182	10.800	28.757
<b>2009-04</b>	5.630	2.334	4.251	123	6.012	18.350

	Antwerpen	Limburg	Oost-Vlaanderen	Vlaams-Brabant	West-Vlaanderen	Totaal
2009-03	11.293	4.393	8.887	317	10.814	35.704
2009-02	7.411	2.746	5.341	66	4.830	20.394
2009-01	10.817	4.755	9.184	305	6.818	31.879
2008-12	8.296	3.477	5.986	201	5.537	23.497
2008-11	10.562	4.381	8.734	346	9.587	33.610
2008-10	9.142	4.037	7.742	307	8.467	29.695
2008-09	7.266	3.345	5.985	211	6.404	23.211
2008-08	6.588	3.271	6.948	241	7.767	24.815
2008-07	4.918	2.774	4.911	189	5.701	18.493
2008-06	3.774	2.154	4.335	121	5.125	15.509
2008-05	4.590	2.466	4.572	108	5.105	16.841
2008-04	5.524	2.781	5.911	186	6.207	20.609
2008-03	9.594	6.103	13.020	537	14.222	43.476
2008-02	6.329	4.880	8.999	243	8.828	29.279
2008-01	11.013	8.580	17.445	699	16.193	53.930
2007-12	7.829	5.902	12.200	507	12.024	38.462
2007-11	5.433	3.878	8.804	291	10.321	28.727
2007-10	2.418	1.870	3.294	66	3.971	11.619
2007-09	3.678	2.568	4.703	104	7.256	18.309
2007-08	3.220	1.913	4.532	151	5.647	15.463
2007-07	5.014	3.708	6.481	282	7.988	23.473
2007-06	3.054	2.063	4.128	148	5.396	14.789
2007-05	5.288	3.031	6.913	306	8.458	23.996
2007-04	2.981	1.859	3.493	92	4.214	12.639
2007-03	7.170	5.246	8.762	304	7.571	29.053

	Antwerpen	Limburg	Oost-Vlaanderen	Vlaams-Brabant	West-Vlaanderen	Totaal
2007-02	5.524	3.912	7.244	332	5.943	22.955
2007-01	10.435	7.709	14.421	669	11.801	45.035
2006-12	8.953	6.511	11.929	602	9.273	37.268
2006-11	7.387	3.767	10.040	333	8.134	29.661
2006-10	6.200	3.244	7.861	301	6.015	23.621
2006-09	3.517	1.608	4.181	150	3.466	12.922
2006-08	3.867	1.827	4.782	200	4.773	15.449
2006-07	2.373	1.153	2.952	90	2.971	9.539
2006-06	1.950	976	2.512	76	2.467	7.981
2006-05	4.818	3.009	7.464	349	6.391	22.031
2006-04	3.376	2.350	6.003	254	5.281	17.264
2006-03	3.866	3.016	8.592	371	8.158	24.003
2006-02	3.350	2.734	7.226	275	7.092	20.677
2006-01	2.894	2.431	6.264	219	5.525	17.333
2005-12	3.484	2.424	6.955	278	6.449	19.590
2005-11	3.263	2.016	7.320	324	6.312	19.235
2005-10	3.165	1.003	6.429	223	4.755	15.575
2005-09	1.907	327	3.702	125	3.306	9.367
2005-08	2.256	34	3.971	117	3.614	9.992
2005-07	965	44	3.651	130	3.834	8.624
2005-06	1.669	35	3.486	96	3.581	8.867
2005-05	2.659	54	5.094	179	4.916	12.902
2005-04	2.191	48	2.218	144	3.825	8.426
2005-03	3.319	55	1.919	221	5.165	10.679
2005-02	3.207	66	1.892	256	5.633	11.054



	Antwerpen	Limburg	Oost-Vlaanderen	Vlaams-Brabant	West-Vlaanderen	Totaal
<b>2005-01</b>	6.001	127	3.666	448	9.893	20.135
<b>2004-12</b>	2.997	61	1.826	236	5.200	10.320
<b>2004-11</b>	2.458	44	1.636	177	5.093	9.408
<b>2004-10</b>	3.728	76	2.623	290	6.243	12.960
<b>2004-09</b>	2.584	75	2.196	217	6.457	11.529
<b>2004-08</b>	1.942	54	1.584	133	2.067	5.780
<b>2004-07</b>	1.294	48	1.347	113	2.492	5.294
<b>2004-06</b>	369	56	1.436	158	2.632	4.651
<b>2004-05</b>	320	29	1.026	95	1.835	3.305
<b>2004-04</b>	521	58	1.660	189	2.656	5.084
<b>2004-03</b>	579	79	2.318	287	3.731	6.994
<b>2004-02</b>	646	114	2.911	361	5.015	9.047
<b>2004-01</b>	905	124	3.396	444	5.803	10.672
<b>2003-12</b>	764	102	2.691	353	4.690	8.600
<b>2003-11</b>	702	68	1.768	249	4.105	6.892
<b>2003-10</b>	628	75	1.495	201	3.905	6.304
<b>2003-09</b>	261	0	0	0	195	456
<b>2003-08</b>	168	0	0	0	172	340
<b>2003-07</b>	273	0	0	0	220	493



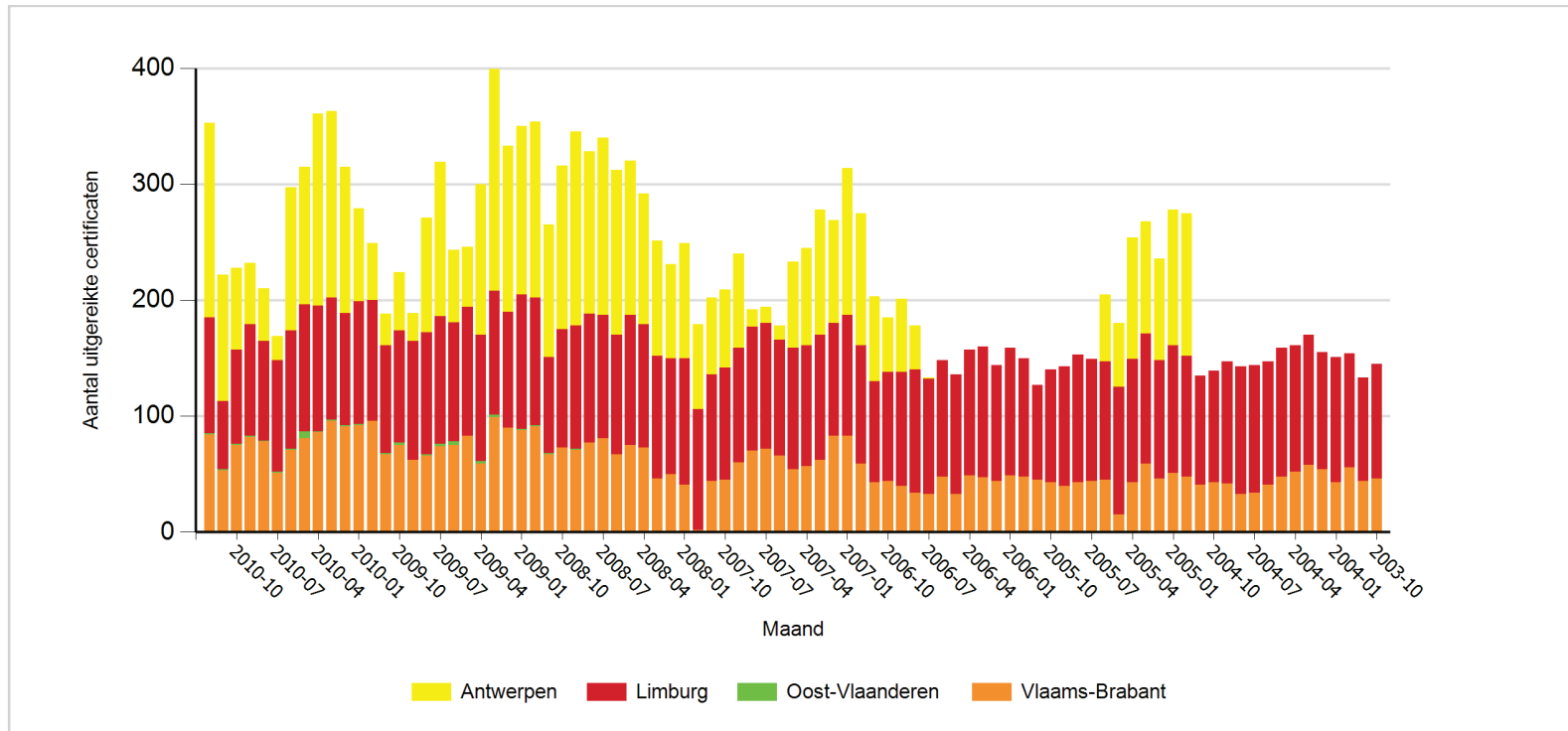
## Uitgereikte groenestroomcertificaten per maand en per provincie voor elektriciteitsproductie uit waterkracht

	Antwerpen	Limburg	Oost-Vlaanderen	Vlaams-Brabant	Totaal
<b>2010-12</b>	168	100	1	84	353
<b>2010-11</b>	109	59	1	53	222
<b>2010-10</b>	71	81	1	75	228
<b>2010-09</b>	53	96	1	82	232
<b>2010-08</b>	45	86	1	78	210
<b>2010-07</b>	21	96	1	51	169
<b>2010-06</b>	123	102	1	71	297
<b>2010-05</b>	119	109	6	81	315
<b>2010-04</b>	166	108	1	86	361
<b>2010-03</b>	161	105	1	96	363
<b>2010-02</b>	126	97	1	91	315
<b>2010-01</b>	80	106	1	92	279
<b>2009-12</b>	49	104	0	96	249
<b>2009-11</b>	27	93	1	67	188
<b>2009-10</b>	50	97	2	75	224
<b>2009-09</b>	24	103	0	62	189
<b>2009-08</b>	99	105	1	66	271
<b>2009-07</b>	133	110	2	74	319
<b>2009-06</b>	62	103	3	75	243
<b>2009-05</b>	52	111	0	83	246
<b>2009-04</b>	130	109	2	59	300

	Antwerpen	Limburg	Oost-Vlaanderen	Vlaams-Brabant	Totaal
<b>2009-03</b>	191	107	2	99	399
<b>2009-02</b>	143	100	0	90	333
<b>2009-01</b>	145	116	1	88	350
<b>2008-12</b>	152	110	1	91	354
<b>2008-11</b>	114	83	1	67	265
<b>2008-10</b>	141	102	0	73	316
<b>2008-09</b>	167	106	1	71	345
<b>2008-08</b>	140	111	0	77	328
<b>2008-07</b>	153	106	0	81	340
<b>2008-06</b>	142	103	0	67	312
<b>2008-05</b>	133	112	0	75	320
<b>2008-04</b>	113	106	0	73	292
<b>2008-03</b>	99	106	0	46	251
<b>2008-02</b>	81	100	0	50	231
<b>2008-01</b>	99	109	0	41	249
<b>2007-12</b>	73	104	0	2	179
<b>2007-11</b>	66	92	0	44	202
<b>2007-10</b>	67	97	0	45	209
<b>2007-09</b>	81	99	0	60	240
<b>2007-08</b>	15	107	0	70	192
<b>2007-07</b>	14	108	0	72	194
<b>2007-06</b>	12	100	0	66	178
<b>2007-05</b>	74	105	0	54	233
<b>2007-04</b>	84	104	0	57	245
<b>2007-03</b>	108	108	0	62	278

	Antwerpen	Limburg	Oost-Vlaanderen	Vlaams-Brabant	Totaal
2007-02	89	97	0	83	269
2007-01	127	104	0	83	314
2006-12	114	102	0	59	275
2006-11	73	87	0	43	203
2006-10	47	94	0	44	185
2006-09	63	98	0	40	201
2006-08	38	106	0	34	178
2006-07	1	99	0	33	133
2006-06	0	100	0	48	148
2006-05	0	103	0	33	136
2006-04	0	108	0	49	157
2006-03	0	113	0	47	160
2006-02	0	100	0	44	144
2006-01	0	110	0	49	159
2005-12	0	102	0	48	150
2005-11	0	82	0	45	127
2005-10	0	97	0	43	140
2005-09	0	103	0	40	143
2005-08	0	110	0	43	153
2005-07	0	105	0	44	149
2005-06	58	102	0	45	205
2005-05	55	110	0	15	180
2005-04	105	106	0	43	254
2005-03	97	112	0	59	268
2005-02	88	102	0	46	236

	Antwerpen	Limburg	Oost-Vlaanderen	Vlaams-Brabant	Totaal
<b>2005-01</b>	117	110	0	51	278
<b>2004-12</b>	123	104	0	48	275
<b>2004-11</b>	0	94	0	41	135
<b>2004-10</b>	0	96	0	43	139
<b>2004-09</b>	0	105	0	42	147
<b>2004-08</b>	0	110	0	33	143
<b>2004-07</b>	0	110	0	34	144
<b>2004-06</b>	0	106	0	41	147
<b>2004-05</b>	0	111	0	48	159
<b>2004-04</b>	0	109	0	52	161
<b>2004-03</b>	0	112	0	58	170
<b>2004-02</b>	0	101	0	54	155
<b>2004-01</b>	0	108	0	43	151
<b>2003-12</b>	0	98	0	56	154
<b>2003-11</b>	0	89	0	44	133
<b>2003-10</b>	0	99	0	46	145



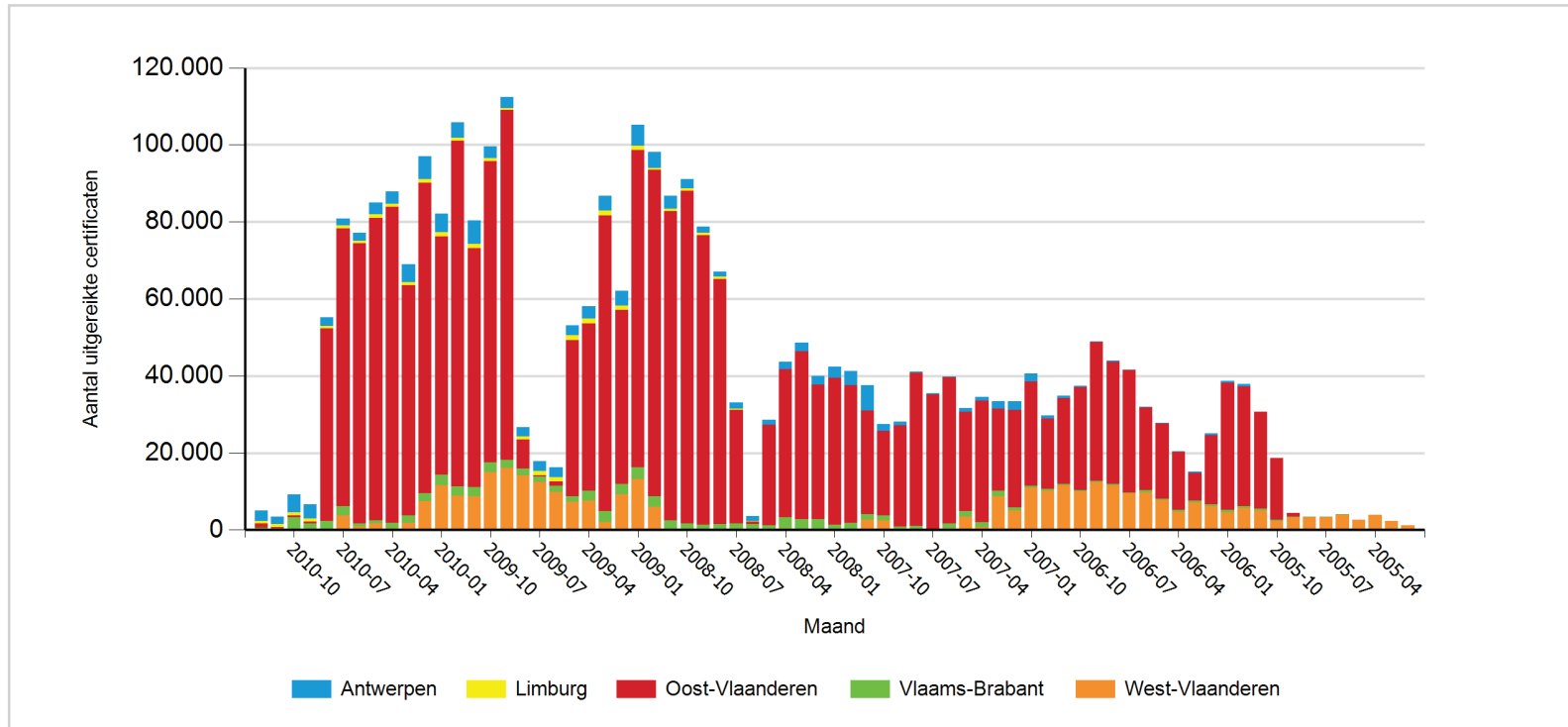
## Uitgereikte groenestroomcertificaten per maand en per provincie voor elektriciteitsproductie uit biomassa uit land- of bosbouw

	Antwerpen	Limburg	Oost-Vlaanderen	Vlaams-Brabant	West-Vlaanderen	Totaal
<b>2010-12</b>	2.757	575	1.254	427	56	5.069
<b>2010-11</b>	1.978	750	349	295	55	3.427
<b>2010-10</b>	4.698	798	535	3.195	48	9.274
<b>2010-09</b>	3.578	808	531	1.590	57	6.564
<b>2010-08</b>	2.270	633	49.897	2.315	65	55.180
<b>2010-07</b>	1.774	730	72.211	2.314	3.817	80.846
<b>2010-06</b>	2.127	574	72.776	855	817	77.149
<b>2010-05</b>	3.021	923	78.607	675	1.720	84.946
<b>2010-04</b>	3.236	806	82.075	1.375	458	87.950
<b>2010-03</b>	4.702	889	59.646	2.039	1.764	69.040
<b>2010-02</b>	5.976	970	80.547	2.084	7.409	96.986
<b>2010-01</b>	4.794	1.110	61.767	2.777	11.627	82.075
<b>2009-12</b>	3.993	815	89.712	2.393	8.959	105.872
<b>2009-11</b>	6.034	1.172	62.010	2.351	8.775	80.342
<b>2009-10</b>	3.002	893	78.213	2.488	14.979	99.575
<b>2009-09</b>	2.872	524	90.764	2.049	16.162	112.371
<b>2009-08</b>	2.364	831	7.576	1.671	14.222	26.664
<b>2009-07</b>	2.494	1.155	376	1.464	12.336	17.825
<b>2009-06</b>	2.524	1.081	1.156	1.579	9.892	16.232
<b>2009-05</b>	2.581	1.337	40.450	1.443	7.342	53.153
<b>2009-04</b>	3.270	1.181	43.471	2.563	7.589	58.074



	Antwerpen	Limburg	Oost-Vlaanderen	Vlaams-Brabant	West-Vlaanderen	Totaal
<b>2009-03</b>	3.915	1.185	76.830	2.910	1.935	86.775
<b>2009-02</b>	3.923	1.072	45.231	2.588	9.272	62.086
<b>2009-01</b>	5.318	1.162	82.301	3.051	13.271	105.103
<b>2008-12</b>	4.124	515	84.737	2.746	5.969	98.091
<b>2008-11</b>	3.308	755	80.153	2.353	173	86.742
<b>2008-10</b>	2.456	662	86.355	1.613	61	91.147
<b>2008-09</b>	1.562	651	75.111	1.342	57	78.723
<b>2008-08</b>	1.257	650	63.546	1.474	56	66.983
<b>2008-07</b>	1.465	436	29.473	1.606	40	33.020
<b>2008-06</b>	1.275	106	605	1.510	23	3.519
<b>2008-05</b>	1.255	0	26.231	1.085	34	28.605
<b>2008-04</b>	1.843	0	38.535	2.886	329	43.593
<b>2008-03</b>	2.260	0	43.460	2.851	15	48.586
<b>2008-02</b>	2.299	0	34.947	2.765	33	40.044
<b>2008-01</b>	2.939	0	38.058	1.286	146	42.429
<b>2007-12</b>	3.734	0	35.620	1.755	151	41.260
<b>2007-11</b>	6.589	0	26.819	1.521	2.586	37.515
<b>2007-10</b>	1.801	0	21.946	1.315	2.424	27.486
<b>2007-09</b>	1.067	0	26.159	803	107	28.136
<b>2007-08</b>	285	0	39.769	902	99	41.055
<b>2007-07</b>	279	0	35.072	20	104	35.475
<b>2007-06</b>	265	0	37.941	1.262	384	39.852
<b>2007-05</b>	961	0	25.886	1.396	3.423	31.666
<b>2007-04</b>	865	0	31.548	1.351	712	34.476
<b>2007-03</b>	1.983	0	21.359	1.453	8.656	33.451

	Antwerpen	Limburg	Oost-Vlaanderen	Vlaams-Brabant	West-Vlaanderen	Totaal
2007-02	2.275	0	25.248	872	4.958	33.353
2007-01	2.126	0	27.101	347	11.022	40.596
2006-12	850	0	18.352	367	10.213	29.782
2006-11	633	0	22.282	335	11.590	34.840
2006-10	347	0	26.709	345	9.988	37.389
2006-09	175	0	36.053	324	12.343	48.895
2006-08	220	0	31.772	302	11.617	43.911
2006-07	0	0	31.777	283	9.469	41.529
2006-06	37	0	21.713	507	9.760	32.017
2006-05	192	0	19.534	297	7.739	27.762
2006-04	221	0	14.902	578	4.699	20.400
2006-03	418	0	7.086	502	7.144	15.150
2006-02	477	0	18.010	453	6.159	25.099
2006-01	552	0	33.024	546	4.610	38.732
2005-12	519	0	31.150	438	5.703	37.810
2005-11	0	0	25.103	429	5.073	30.605
2005-10	0	0	15.964	304	2.393	18.661
2005-09	0	0	1.004	109	3.346	4.459
2005-08	0	0	0	9	3.477	3.486
2005-07	0	0	0	70	3.313	3.383
2005-06	0	0	0	184	3.928	4.112
2005-05	0	0	0	0	2.581	2.581
2005-04	0	0	0	0	3.893	3.893
2005-03	0	0	0	0	2.303	2.303
2005-02	0	0	0	0	1.150	1.150



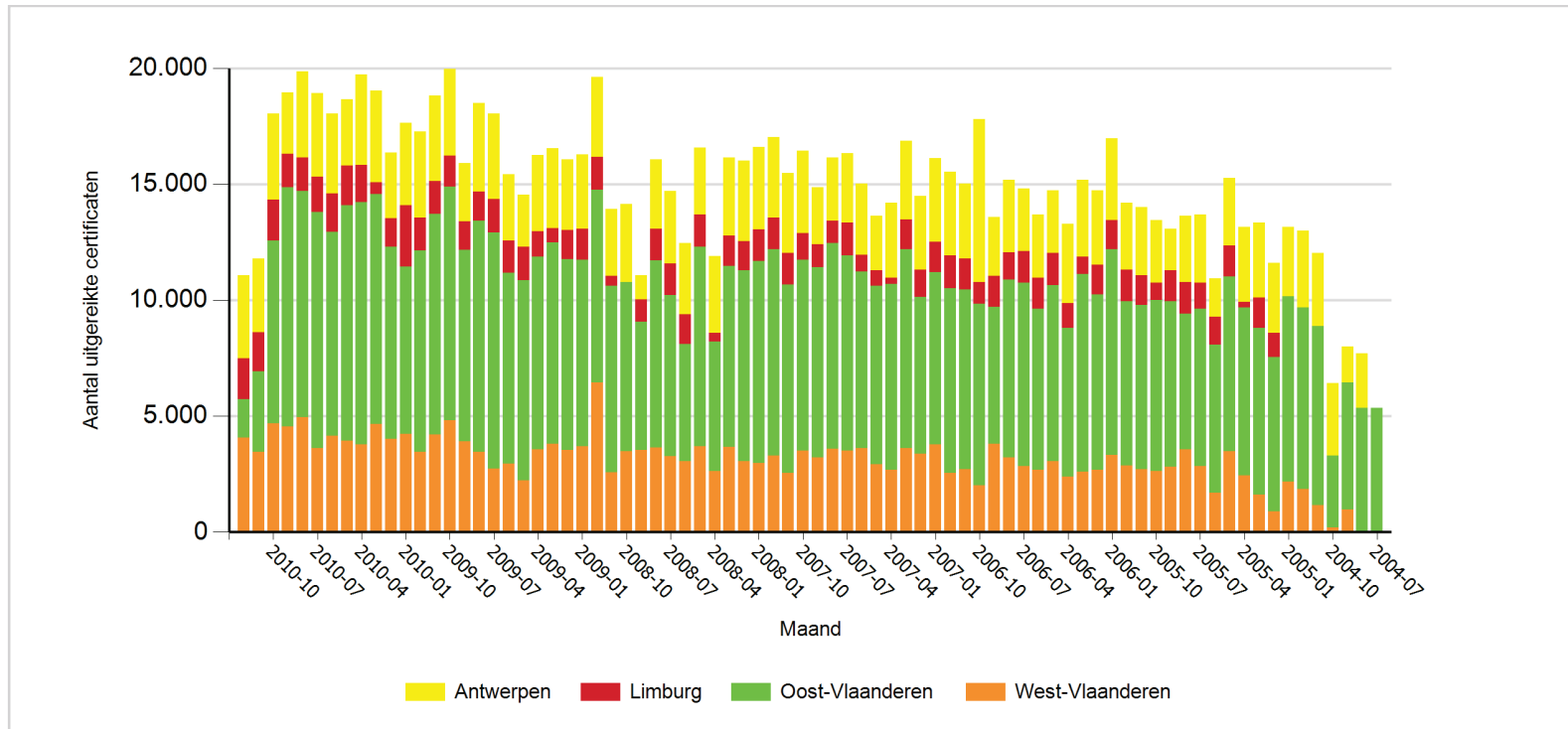
## Uitgereikte groenestroomcertificaten per maand en per provincie voor elektriciteitsproductie uit biomassa uit huishoudelijk afval

	Antwerpen	Limburg	Oost-Vlaanderen	West-Vlaanderen	Totaal
<b>2010-12</b>	3.583	1.775	1.655	4.063	11.076
<b>2010-11</b>	3.175	1.675	3.475	3.460	11.785
<b>2010-10</b>	3.701	1.778	7.872	4.685	18.036
<b>2010-09</b>	2.632	1.432	10.324	4.546	18.934
<b>2010-08</b>	3.700	1.457	9.752	4.943	19.852
<b>2010-07</b>	3.602	1.526	10.168	3.622	18.918
<b>2010-06</b>	3.463	1.646	8.794	4.142	18.045
<b>2010-05</b>	2.857	1.715	10.131	3.942	18.645
<b>2010-04</b>	3.902	1.601	10.444	3.767	19.714
<b>2010-03</b>	3.956	501	9.904	4.667	19.028
<b>2010-02</b>	2.821	1.246	8.254	4.029	16.350
<b>2010-01</b>	3.553	2.648	7.191	4.244	17.636
<b>2009-12</b>	3.718	1.419	8.660	3.466	17.263
<b>2009-11</b>	3.665	1.434	9.502	4.203	18.804
<b>2009-10</b>	3.738	1.330	10.066	4.822	19.956
<b>2009-09</b>	2.517	1.229	8.257	3.902	15.905
<b>2009-08</b>	3.805	1.270	9.966	3.446	18.487
<b>2009-07</b>	3.686	1.440	10.179	2.734	18.039
<b>2009-06</b>	2.877	1.382	8.211	2.957	15.427
<b>2009-05</b>	2.242	1.444	8.619	2.222	14.527
<b>2009-04</b>	3.280	1.094	8.305	3.563	16.242

	Antwerpen	Limburg	Oost-Vlaanderen	West-Vlaanderen	Totaal
<b>2009-03</b>	3.462	607	8.664	3.816	16.549
<b>2009-02</b>	3.050	1.245	8.239	3.533	16.067
<b>2009-01</b>	3.195	1.337	8.048	3.697	16.277
<b>2008-12</b>	3.440	1.417	8.307	6.436	19.600
<b>2008-11</b>	2.879	425	8.030	2.580	13.914
<b>2008-10</b>	3.370	0	7.294	3.482	14.146
<b>2008-09</b>	1.046	968	5.511	3.542	11.067
<b>2008-08</b>	2.990	1.353	8.080	3.641	16.064
<b>2008-07</b>	3.119	1.381	6.937	3.268	14.705
<b>2008-06</b>	3.082	1.274	5.039	3.063	12.458
<b>2008-05</b>	2.876	1.395	8.606	3.684	16.561
<b>2008-04</b>	3.308	374	5.587	2.636	11.905
<b>2008-03</b>	3.362	1.302	7.815	3.664	16.143
<b>2008-02</b>	3.465	1.252	8.236	3.044	15.997
<b>2008-01</b>	3.553	1.362	8.706	2.971	16.592
<b>2007-12</b>	3.461	1.353	8.910	3.292	17.016
<b>2007-11</b>	3.441	1.356	8.128	2.537	15.462
<b>2007-10</b>	3.563	1.140	8.241	3.503	16.447
<b>2007-09</b>	2.458	984	8.202	3.226	14.870
<b>2007-08</b>	2.743	943	8.878	3.589	16.153
<b>2007-07</b>	3.012	1.392	8.416	3.519	16.339
<b>2007-06</b>	3.063	727	7.610	3.621	15.021
<b>2007-05</b>	2.351	663	7.704	2.918	13.636
<b>2007-04</b>	3.245	273	8.011	2.670	14.199
<b>2007-03</b>	3.407	1.278	8.566	3.621	16.872

	Antwerpen	Limburg	Oost-Vlaanderen	West-Vlaanderen	Totaal
<b>2007-02</b>	3.177	1.179	6.744	3.384	14.484
<b>2007-01</b>	3.604	1.306	7.405	3.788	16.103
<b>2006-12</b>	3.603	1.423	7.947	2.556	15.529
<b>2006-11</b>	3.248	1.316	7.766	2.699	15.029
<b>2006-10</b>	7.037	927	7.829	2.007	17.800
<b>2006-09</b>	2.539	1.338	5.895	3.817	13.589
<b>2006-08</b>	3.129	1.175	7.647	3.223	15.174
<b>2006-07</b>	2.708	1.336	7.918	2.842	14.804
<b>2006-06</b>	2.712	1.331	6.945	2.685	13.673
<b>2006-05</b>	2.696	1.389	7.584	3.054	14.723
<b>2006-04</b>	3.402	1.074	6.402	2.398	13.276
<b>2006-03</b>	3.318	753	8.506	2.613	15.190
<b>2006-02</b>	3.206	1.283	7.572	2.674	14.735
<b>2006-01</b>	3.530	1.247	8.860	3.333	16.970
<b>2005-12</b>	2.893	1.361	7.092	2.857	14.203
<b>2005-11</b>	2.951	1.268	7.084	2.707	14.010
<b>2005-10</b>	2.694	751	7.368	2.632	13.445
<b>2005-09</b>	1.796	1.340	7.116	2.824	13.076
<b>2005-08</b>	2.845	1.371	5.840	3.573	13.629
<b>2005-07</b>	2.926	1.130	6.776	2.854	13.686
<b>2005-06</b>	1.654	1.196	6.406	1.683	10.939
<b>2005-05</b>	2.919	1.343	7.533	3.476	15.271
<b>2005-04</b>	3.239	229	7.236	2.442	13.146
<b>2005-03</b>	3.238	1.311	7.168	1.624	13.341
<b>2005-02</b>	3.017	1.045	6.651	898	11.611

	Antwerpen	Limburg	Oost-Vlaanderen	West-Vlaanderen	Totaal
<b>2005-01</b>	3.000	0	7.982	2.166	13.148
<b>2004-12</b>	3.296	0	7.820	1.865	12.981
<b>2004-11</b>	3.135	0	7.740	1.148	12.023
<b>2004-10</b>	3.135	0	3.091	203	6.429
<b>2004-09</b>	1.535	0	5.473	986	7.994
<b>2004-08</b>	2.342	0	5.354	0	7.696
<b>2004-07</b>	0	0	5.341	0	5.341





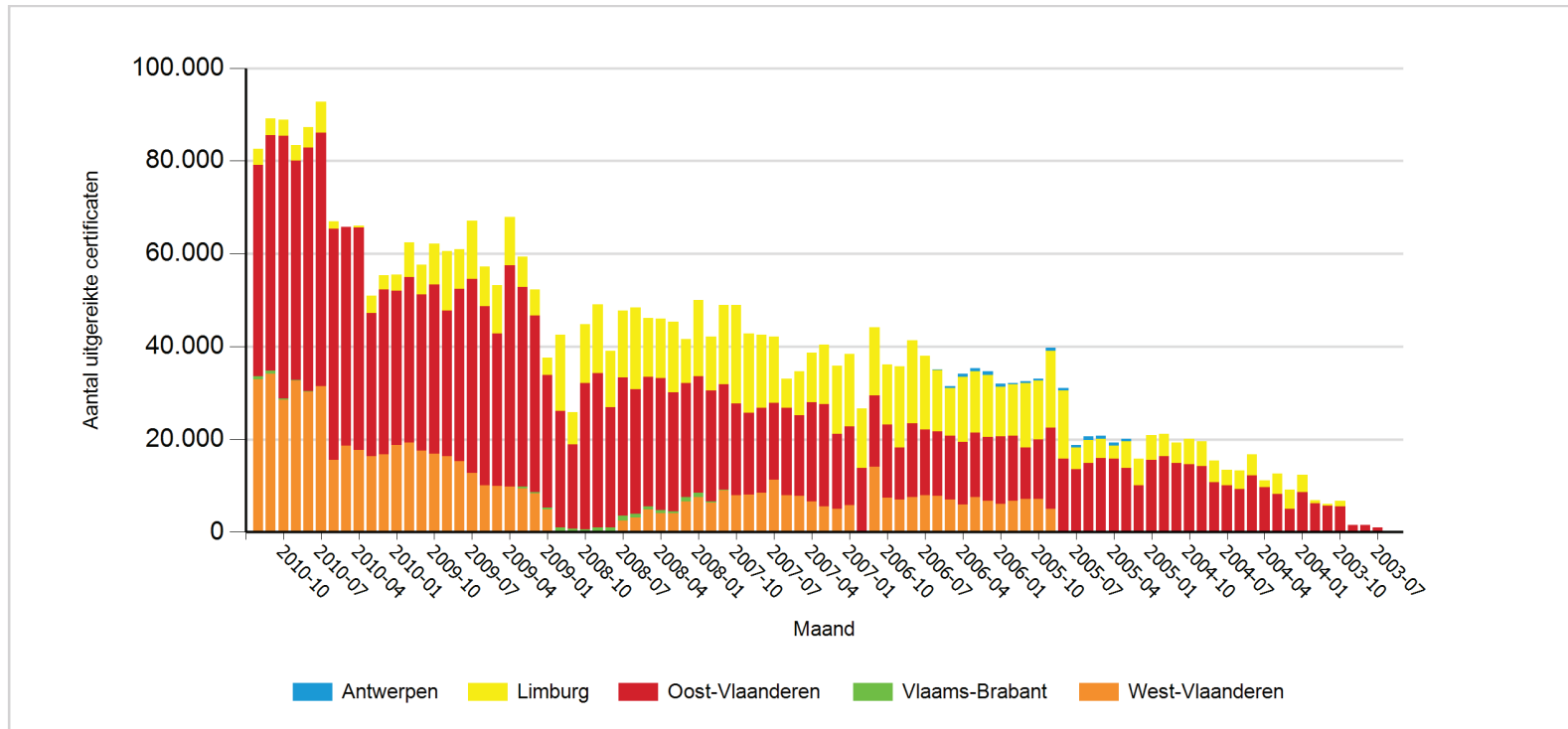
## Uitgereikte groenestroomcertificaten per maand en per provincie voor elektriciteitsproductie uit biomassa gesorteerd of selectief ingezameld afval

	Antwerpen	Limburg	Oost-Vlaanderen	Vlaams-Brabant	West-Vlaanderen	Totaal
<b>2010-12</b>	0	3.429	45.513	750	32.872	82.564
<b>2010-11</b>	0	3.586	50.835	629	34.097	89.147
<b>2010-10</b>	0	3.445	56.662	281	28.483	88.871
<b>2010-09</b>	0	3.285	47.228	41	32.758	83.312
<b>2010-08</b>	0	4.400	52.466	137	30.211	87.214
<b>2010-07</b>	0	6.579	54.722	0	31.371	92.672
<b>2010-06</b>	0	1.551	49.870	0	15.496	66.917
<b>2010-05</b>	0	0	47.093	0	18.683	65.776
<b>2010-04</b>	0	488	47.929	0	17.644	66.061
<b>2010-03</b>	0	3.675	30.918	0	16.318	50.911
<b>2010-02</b>	0	3.091	35.537	0	16.741	55.369
<b>2010-01</b>	0	3.506	33.281	0	18.706	55.493
<b>2009-12</b>	0	7.477	35.670	0	19.331	62.478
<b>2009-11</b>	0	6.485	33.657	0	17.484	57.626
<b>2009-10</b>	0	8.866	36.329	0	16.943	62.138
<b>2009-09</b>	0	12.825	31.431	0	16.296	60.552
<b>2009-08</b>	0	8.491	37.092	0	15.316	60.899
<b>2009-07</b>	0	12.559	41.859	0	12.731	67.149
<b>2009-06</b>	0	8.505	38.589	0	10.066	57.160
<b>2009-05</b>	0	10.392	32.885	0	9.930	53.207
<b>2009-04</b>	0	10.428	47.646	0	9.813	67.887

	Antwerpen	Limburg	Oost-Vlaanderen	Vlaams-Brabant	West-Vlaanderen	Totaal
2009-03	0	6.485	43.077	303	9.447	59.312
2009-02	0	5.552	38.093	211	8.351	52.207
2009-01	0	3.731	28.498	493	4.839	37.561
2008-12	0	16.498	25.009	795	254	42.556
2008-11	0	6.993	18.196	679	0	25.868
2008-10	0	12.672	31.548	592	0	44.812
2008-09	0	14.860	33.158	1.046	0	49.064
2008-08	0	12.112	25.933	1.017	0	39.062
2008-07	0	14.516	29.756	1.054	2.451	47.777
2008-06	0	17.655	26.851	821	3.091	48.418
2008-05	0	12.787	27.877	595	4.916	46.175
2008-04	0	12.784	28.437	712	4.051	45.984
2008-03	0	15.217	25.660	410	4.071	45.358
2008-02	0	9.426	24.690	833	6.637	41.586
2008-01	0	16.497	25.087	908	7.515	50.007
2007-12	0	11.614	23.940	288	6.295	42.137
2007-11	0	17.104	22.663	126	9.063	48.956
2007-10	0	21.223	19.728	0	7.970	48.921
2007-09	0	17.103	17.649	0	8.078	42.830
2007-08	0	15.750	18.327	0	8.438	42.515
2007-07	0	14.258	16.569	0	11.316	42.143
2007-06	0	6.393	18.792	0	7.920	33.105
2007-05	0	9.481	17.465	0	7.762	34.708
2007-04	0	10.723	21.443	0	6.542	38.708
2007-03	0	12.838	21.935	0	5.595	40.368

	Antwerpen	Limburg	Oost-Vlaanderen	Vlaams-Brabant	West-Vlaanderen	Totaal
2007-02	0	14.761	16.175	0	4.939	35.875
2007-01	0	15.726	16.876	0	5.830	38.432
2006-12	0	12.828	13.864	0	0	26.692
2006-11	0	14.585	15.354	0	14.131	44.070
2006-10	0	12.939	15.701	0	7.463	36.103
2006-09	0	17.447	11.269	0	6.973	35.689
2006-08	0	17.901	15.913	0	7.536	41.350
2006-07	0	15.903	14.164	0	7.920	37.987
2006-06	118	13.207	13.901	0	7.754	34.980
2006-05	366	10.318	13.720	0	6.978	31.382
2006-04	574	14.059	13.446	0	5.964	34.043
2006-03	770	13.111	13.875	0	7.594	35.350
2006-02	804	13.407	13.717	0	6.708	34.636
2006-01	596	10.764	14.479	0	6.119	31.958
2005-12	299	11.111	13.996	0	6.696	32.102
2005-11	335	13.919	11.150	0	7.099	32.503
2005-10	383	12.634	12.829	0	7.176	33.022
2005-09	579	16.617	17.494	0	5.003	39.693
2005-08	424	14.788	15.764	0	0	30.976
2005-07	549	4.676	13.529	0	0	18.754
2005-06	731	4.971	14.858	0	0	20.560
2005-05	625	4.094	16.014	0	0	20.733
2005-04	754	2.774	15.813	0	0	19.341
2005-03	486	5.801	13.806	0	0	20.093
2005-02	0	5.774	10.013	0	0	15.787

	Antwerpen	Limburg	Oost-Vlaanderen	Vlaams-Brabant	West-Vlaanderen	Totaal
<b>2005-01</b>	0	5.350	15.567	0	0	20.917
<b>2004-12</b>	0	4.793	16.390	0	0	21.183
<b>2004-11</b>	0	4.351	14.885	0	0	19.236
<b>2004-10</b>	0	5.429	14.670	0	0	20.099
<b>2004-09</b>	0	5.303	14.200	0	0	19.503
<b>2004-08</b>	0	4.732	10.748	0	0	15.480
<b>2004-07</b>	0	3.281	10.098	0	0	13.379
<b>2004-06</b>	0	4.047	9.296	0	0	13.343
<b>2004-05</b>	0	4.435	12.274	0	0	16.709
<b>2004-04</b>	0	1.517	9.652	0	0	11.169
<b>2004-03</b>	0	4.419	8.138	0	0	12.557
<b>2004-02</b>	0	4.105	4.971	0	0	9.076
<b>2004-01</b>	0	3.724	8.591	0	0	12.315
<b>2003-12</b>	0	734	6.160	0	0	6.894
<b>2003-11</b>	0	514	5.604	0	0	6.118
<b>2003-10</b>	0	1.311	5.470	0	0	6.781
<b>2003-09</b>	0	0	1.567	0	0	1.567
<b>2003-08</b>	0	0	1.534	0	0	1.534
<b>2003-07</b>	0	0	1.025	0	0	1.025
<b>2003-06</b>	0	0	119	0	0	119



## Uitgereikte groenestroomcertificaten per maand en per provincie voor elektriciteitsproductie uit biogas - stortgas

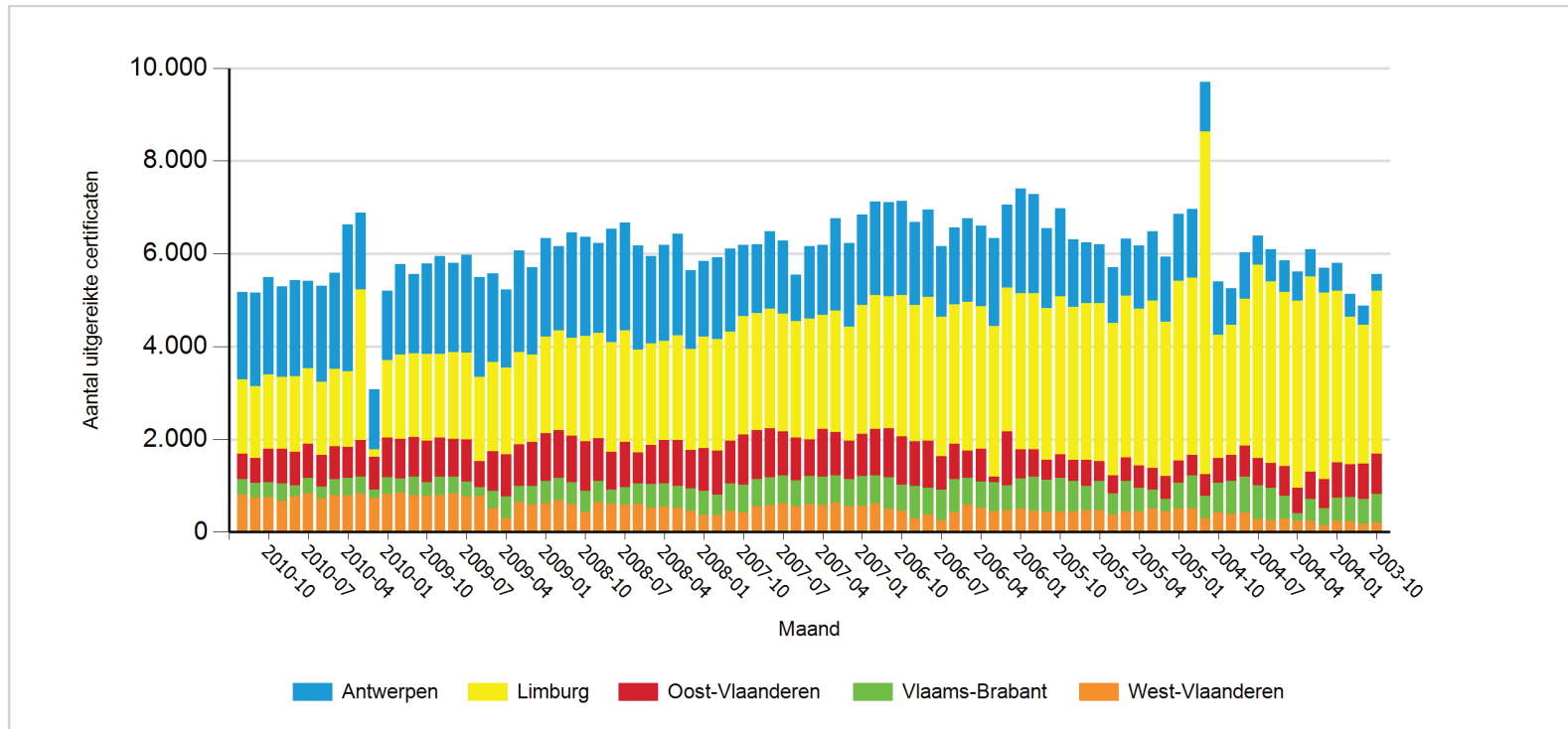
	Antwerpen	Limburg	Oost-Vlaanderen	Vlaams-Brabant	West-Vlaanderen	Totaal
<b>2010-12</b>	1.886	1.603	545	328	812	5.174
<b>2010-11</b>	2.016	1.550	542	311	745	5.164
<b>2010-10</b>	2.097	1.605	723	313	759	5.497
<b>2010-09</b>	1.947	1.550	746	366	678	5.287
<b>2010-08</b>	2.080	1.618	730	242	762	5.432
<b>2010-07</b>	1.885	1.631	734	334	831	5.415
<b>2010-06</b>	2.070	1.580	674	256	731	5.311
<b>2010-05</b>	2.078	1.662	714	348	790	5.592
<b>2010-04</b>	3.169	1.626	674	366	795	6.630
<b>2010-03</b>	1.659	3.248	782	365	829	6.883
<b>2010-02</b>	1.303	152	713	169	744	3.081
<b>2010-01</b>	1.501	1.664	856	368	814	5.203
<b>2009-12</b>	1.951	1.812	854	304	852	5.773
<b>2009-11</b>	1.701	1.810	852	403	793	5.559
<b>2009-10</b>	1.947	1.869	894	301	778	5.789
<b>2009-09</b>	2.116	1.800	837	406	789	5.948
<b>2009-08</b>	1.924	1.864	821	360	834	5.803
<b>2009-07</b>	2.111	1.880	908	317	765	5.981
<b>2009-06</b>	2.150	1.820	558	190	776	5.494
<b>2009-05</b>	1.902	1.922	851	383	510	5.568
<b>2009-04</b>	1.675	1.874	913	468	294	5.224

	Antwerpen	Limburg	Oost-Vlaanderen	Vlaams-Brabant	West-Vlaanderen	Totaal
2009-03	2.193	1.987	898	343	648	6.069
2009-02	1.885	1.874	953	401	593	5.706
2009-01	2.128	2.082	1.021	480	625	6.336
2008-12	1.812	2.155	1.025	476	688	6.156
2008-11	2.265	2.110	1.005	466	604	6.450
2008-10	2.124	2.281	1.062	457	431	6.355
2008-09	1.945	2.260	931	452	644	6.232
2008-08	2.451	2.365	812	308	602	6.538
2008-07	2.323	2.398	976	379	589	6.665
2008-06	2.251	2.210	667	439	609	6.176
2008-05	1.881	2.195	839	502	532	5.949
2008-04	2.072	2.142	935	488	557	6.194
2008-03	2.202	2.249	992	465	526	6.434
2008-02	1.694	2.183	829	469	465	5.640
2008-01	1.633	2.398	927	516	366	5.840
2007-12	1.753	2.402	950	443	368	5.916
2007-11	1.786	2.362	918	582	462	6.110
2007-10	1.543	2.552	1.076	599	424	6.194
2007-09	1.481	2.526	1.049	587	558	6.201
2007-08	1.671	2.573	1.057	606	579	6.486
2007-07	1.581	2.542	947	595	623	6.288
2007-06	1.005	2.506	927	563	552	5.553
2007-05	1.563	2.603	784	604	603	6.157
2007-04	1.516	2.452	1.026	614	584	6.192
2007-03	1.979	2.629	931	586	633	6.758

	Antwerpen	Limburg	Oost-Vlaanderen	Vlaams-Brabant	West-Vlaanderen	Totaal
<b>2007-02</b>	1.812	2.449	830	589	552	6.232
<b>2007-01</b>	1.941	2.787	903	647	561	6.839
<b>2006-12</b>	2.017	2.881	1.000	597	624	7.119
<b>2006-11</b>	2.018	2.846	1.061	678	500	7.103
<b>2006-10</b>	2.039	3.040	1.045	556	460	7.140
<b>2006-09</b>	1.790	2.939	958	696	299	6.682
<b>2006-08</b>	1.876	3.109	1.008	581	374	6.948
<b>2006-07</b>	1.523	3.005	722	661	257	6.168
<b>2006-06</b>	1.655	3.014	758	701	438	6.566
<b>2006-05</b>	1.813	3.200	589	578	588	6.768
<b>2006-04</b>	1.736	3.073	705	557	527	6.598
<b>2006-03</b>	1.905	3.244	117	633	440	6.339
<b>2006-02</b>	1.795	3.086	1.163	542	470	7.056
<b>2006-01</b>	2.259	3.362	623	660	496	7.400
<b>2005-12</b>	2.134	3.359	588	733	466	7.280
<b>2005-11</b>	1.716	3.272	426	695	439	6.548
<b>2005-10</b>	1.902	3.398	515	719	446	6.980
<b>2005-09</b>	1.451	3.307	451	660	441	6.310
<b>2005-08</b>	1.304	3.380	567	517	475	6.243
<b>2005-07</b>	1.269	3.402	425	628	476	6.200
<b>2005-06</b>	1.210	3.282	382	455	383	5.712
<b>2005-05</b>	1.228	3.484	513	646	453	6.324
<b>2005-04</b>	1.363	3.375	482	511	441	6.172
<b>2005-03</b>	1.503	3.604	473	399	509	6.488
<b>2005-02</b>	1.403	3.329	492	269	448	5.941



	Antwerpen	Limburg	Oost-Vlaanderen	Vlaams-Brabant	West-Vlaanderen	Totaal
<b>2005-01</b>	1.437	3.876	478	553	508	6.852
<b>2004-12</b>	1.483	3.820	434	717	510	6.964
<b>2004-11</b>	1.075	7.379	463	490	295	9.702
<b>2004-10</b>	1.146	2.660	526	649	417	5.398
<b>2004-09</b>	789	2.806	558	701	399	5.253
<b>2004-08</b>	997	3.174	658	779	421	6.029
<b>2004-07</b>	627	4.162	595	712	290	6.386
<b>2004-06</b>	704	3.905	541	692	257	6.099
<b>2004-05</b>	691	3.747	642	491	287	5.858
<b>2004-04</b>	636	4.025	555	154	246	5.616
<b>2004-03</b>	588	4.194	589	477	241	6.089
<b>2004-02</b>	545	4.012	636	348	159	5.700
<b>2004-01</b>	602	3.706	751	501	243	5.803
<b>2003-12</b>	499	3.173	712	521	228	5.133
<b>2003-11</b>	417	2.988	760	531	184	4.880
<b>2003-10</b>	364	3.504	876	618	200	5.562



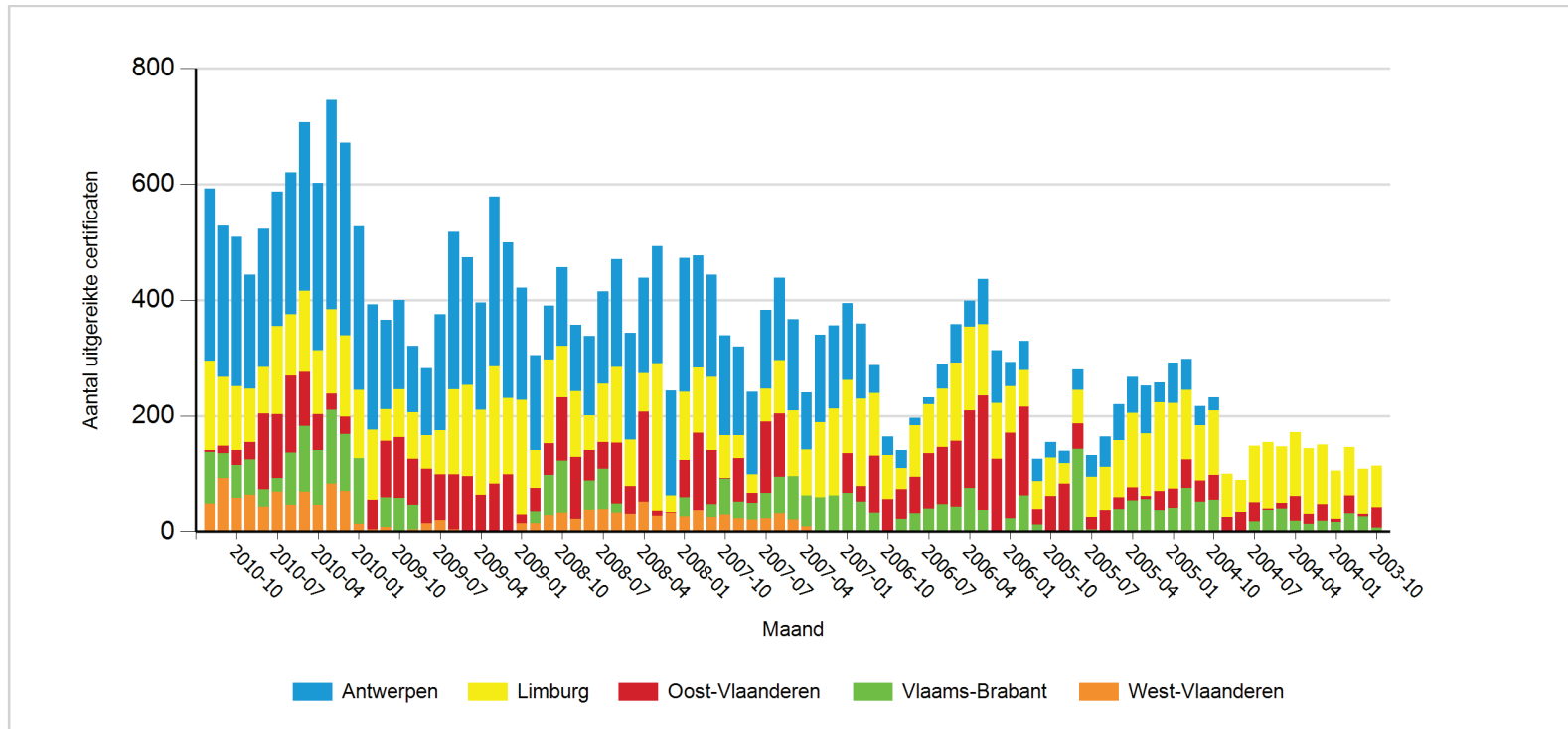
## Uitgereikte groenestroomcertificaten per maand en per provincie voor elektriciteitsproductie uit biogas - RWZI

	Antwerpen	Limburg	Oost-Vlaanderen	Vlaams-Brabant	West-Vlaanderen	Totaal
<b>2010-12</b>	297	153	4	88	50	592
<b>2010-11</b>	260	119	13	43	93	528
<b>2010-10</b>	258	110	25	57	59	509
<b>2010-09</b>	197	92	30	60	65	444
<b>2010-08</b>	238	80	131	30	44	523
<b>2010-07</b>	232	152	110	23	70	587
<b>2010-06</b>	245	105	133	89	48	620
<b>2010-05</b>	291	140	93	113	70	707
<b>2010-04</b>	289	110	62	93	48	602
<b>2010-03</b>	361	145	28	127	84	745
<b>2010-02</b>	332	140	30	98	71	671
<b>2010-01</b>	282	117	0	115	13	527
<b>2009-12</b>	216	121	52	0	4	393
<b>2009-11</b>	154	55	97	52	8	366
<b>2009-10</b>	154	82	105	58	1	400
<b>2009-09</b>	114	81	79	43	4	321
<b>2009-08</b>	116	58	95	0	14	283
<b>2009-07</b>	199	76	80	0	20	375
<b>2009-06</b>	272	146	96	0	4	518
<b>2009-05</b>	220	157	97	0	0	474
<b>2009-04</b>	185	146	65	0	0	396

	Antwerpen	Limburg	Oost-Vlaanderen	Vlaams-Brabant	West-Vlaanderen	Totaal
<b>2009-03</b>	292	202	83	0	1	578
<b>2009-02</b>	268	131	100	0	0	499
<b>2009-01</b>	193	199	15	0	14	421
<b>2008-12</b>	164	65	41	21	14	305
<b>2008-11</b>	93	144	54	71	28	390
<b>2008-10</b>	136	89	109	91	32	457
<b>2008-09</b>	114	113	108	0	22	357
<b>2008-08</b>	137	59	53	50	39	338
<b>2008-07</b>	159	101	46	69	40	415
<b>2008-06</b>	185	131	104	18	32	470
<b>2008-05</b>	183	81	49	0	30	343
<b>2008-04</b>	164	66	155	0	53	438
<b>2008-03</b>	202	255	9	0	27	493
<b>2008-02</b>	180	30	2	0	32	244
<b>2008-01</b>	231	118	64	34	26	473
<b>2007-12</b>	193	113	134	0	37	477
<b>2007-11</b>	177	125	93	24	25	444
<b>2007-10</b>	172	74	1	63	29	339
<b>2007-09</b>	153	39	75	30	23	320
<b>2007-08</b>	142	32	17	30	21	242
<b>2007-07</b>	136	56	123	45	23	383
<b>2007-06</b>	142	91	109	65	31	438
<b>2007-05</b>	157	113	0	76	21	367
<b>2007-04</b>	98	80	0	54	9	241
<b>2007-03</b>	150	130	0	60	0	340

	Antwerpen	Limburg	Oost-Vlaanderen	Vlaams-Brabant	West-Vlaanderen	Totaal
<b>2007-02</b>	143	149	0	64	0	356
<b>2007-01</b>	133	126	68	68	0	395
<b>2006-12</b>	129	150	27	53	0	359
<b>2006-11</b>	48	108	99	33	0	288
<b>2006-10</b>	32	76	57	0	0	165
<b>2006-09</b>	31	37	52	22	0	142
<b>2006-08</b>	13	88	65	31	0	197
<b>2006-07</b>	11	85	95	41	0	232
<b>2006-06</b>	43	100	98	49	0	290
<b>2006-05</b>	66	135	113	44	0	358
<b>2006-04</b>	45	144	134	76	0	399
<b>2006-03</b>	78	122	198	38	0	436
<b>2006-02</b>	90	96	127	0	0	313
<b>2006-01</b>	41	81	148	23	0	293
<b>2005-12</b>	51	63	153	63	0	330
<b>2005-11</b>	38	48	28	12	0	126
<b>2005-10</b>	26	67	62	0	0	155
<b>2005-09</b>	21	35	84	0	0	140
<b>2005-08</b>	35	58	43	144	0	280
<b>2005-07</b>	37	71	21	4	0	133
<b>2005-06</b>	52	76	35	2	0	165
<b>2005-05</b>	61	99	20	40	0	220
<b>2005-04</b>	62	129	22	55	0	268
<b>2005-03</b>	83	108	5	57	0	253
<b>2005-02</b>	34	153	34	37	0	258

	Antwerpen	Limburg	Oost-Vlaanderen	Vlaams-Brabant	West-Vlaanderen	Totaal
<b>2005-01</b>	69	148	33	42	0	292
<b>2004-12</b>	54	120	49	76	0	299
<b>2004-11</b>	33	95	36	53	0	217
<b>2004-10</b>	22	111	43	56	0	232
<b>2004-09</b>	0	76	25	0	0	101
<b>2004-08</b>	0	56	34	0	0	90
<b>2004-07</b>	0	97	34	18	0	149
<b>2004-06</b>	0	114	3	38	0	155
<b>2004-05</b>	0	97	10	41	0	148
<b>2004-04</b>	0	110	43	19	0	172
<b>2004-03</b>	0	115	17	13	0	145
<b>2004-02</b>	0	102	30	19	0	151
<b>2004-01</b>	0	84	5	17	0	106
<b>2003-12</b>	0	83	33	31	0	147
<b>2003-11</b>	0	79	4	26	0	109
<b>2003-10</b>	0	72	36	7	0	115



## Uitgereikte groenestroomcertificaten per maand en per provincie voor elektriciteitsproductie uit biogas - overig

	Antwerpen	Limburg	Oost-Vlaanderen	Vlaams-Brabant	West-Vlaanderen	Totaal
<b>2010-12</b>	6.778	2.789	3.928	2.281	8.971	24.747
<b>2010-11</b>	6.856	2.974	3.938	2.449	9.969	26.186
<b>2010-10</b>	7.369	3.451	4.076	2.658	10.714	28.268
<b>2010-09</b>	7.176	3.366	5.159	2.534	9.984	28.219
<b>2010-08</b>	7.134	3.836	4.587	2.214	9.419	27.190
<b>2010-07</b>	7.228	3.906	5.690	2.189	9.810	28.823
<b>2010-06</b>	7.571	3.270	4.790	2.461	10.581	28.673
<b>2010-05</b>	7.484	3.351	4.947	2.287	11.442	29.511
<b>2010-04</b>	7.118	3.736	5.007	2.297	10.243	28.401
<b>2010-03</b>	7.878	3.521	5.570	3.035	10.883	30.887
<b>2010-02</b>	6.552	2.979	5.276	2.522	8.484	25.813
<b>2010-01</b>	6.878	2.807	5.660	2.443	7.923	25.711
<b>2009-12</b>	9.163	2.668	17.535	2.822	7.969	40.157
<b>2009-11</b>	5.535	2.799	16.733	2.278	7.316	34.661
<b>2009-10</b>	6.628	2.734	16.967	1.867	7.647	35.843
<b>2009-09</b>	4.503	1.948	12.769	1.403	6.721	27.344
<b>2009-08</b>	4.235	1.712	22.099	1.003	7.216	36.265
<b>2009-07</b>	4.680	2.356	21.682	1.189	7.050	36.957
<b>2009-06</b>	4.439	2.447	11.422	1.309	6.394	26.011
<b>2009-05</b>	5.457	2.802	14.980	992	5.282	29.513
<b>2009-04</b>	3.296	2.890	17.281	1.094	4.152	28.713



	Antwerpen	Limburg	Oost-Vlaanderen	Vlaams-Brabant	West-Vlaanderen	Totaal
2009-03	4.047	2.835	15.866	1.277	4.319	28.344
2009-02	3.552	3.623	15.385	1.057	3.337	26.954
2009-01	4.491	1.642	10.060	1.238	2.903	20.334
2008-12	5.185	1.702	3.140	1.505	3.220	14.752
2008-11	2.441	1.517	3.147	1.441	3.109	11.655
2008-10	2.419	1.555	4.357	1.338	3.000	12.669
2008-09	2.366	1.351	10.584	690	2.887	17.878
2008-08	2.465	1.154	11.144	737	2.807	18.307
2008-07	2.394	926	17.423	589	2.674	24.006
2008-06	2.301	1.889	2.556	392	2.637	9.775
2008-05	2.097	898	11.345	371	2.741	17.452
2008-04	2.341	485	16.281	447	2.828	22.382
2008-03	2.353	446	13.531	469	2.613	19.412
2008-02	2.273	412	11.421	305	2.907	17.318
2008-01	2.389	380	2.700	311	2.268	8.048
2007-12	2.587	360	2.559	437	2.581	8.524
2007-11	2.389	425	5.292	422	2.892	11.420
2007-10	2.352	406	11.651	440	2.562	17.411
2007-09	2.295	296	13.497	325	1.725	18.138
2007-08	2.456	407	10.531	363	1.606	15.363
2007-07	2.498	353	9.275	392	1.536	14.054
2007-06	2.326	282	11.218	401	1.453	15.680
2007-05	2.271	264	18.206	380	1.248	22.369
2007-04	1.886	256	10.003	359	1.161	13.665
2007-03	2.004	283	13.829	263	1.282	17.661

	Antwerpen	Limburg	Oost-Vlaanderen	Vlaams-Brabant	West-Vlaanderen	Totaal
2007-02	2.100	285	7.492	36	1.012	10.925
2007-01	2.614	29	3.759	260	948	7.610
2006-12	2.603	242	10.476	322	1.138	14.781
2006-11	2.653	376	4.445	373	1.192	9.039
2006-10	2.414	339	6.478	519	1.096	10.846
2006-09	2.152	358	7.839	445	1.061	11.855
2006-08	2.291	283	814	455	945	4.788
2006-07	2.219	272	993	458	973	4.915
2006-06	2.254	242	1.213	401	1.015	5.125
2006-05	2.318	101	877	537	936	4.769
2006-04	2.334	339	1.230	487	813	5.203
2006-03	2.327	407	3.694	343	941	7.712
2006-02	1.439	0	9.878	161	749	12.227
2006-01	2.848	0	6.283	345	845	10.321
2005-12	2.145	0	15.164	286	834	18.429
2005-11	1.816	0	3.529	314	767	6.426
2005-10	1.590	0	13.220	352	673	15.835
2005-09	1.391	0	14.242	400	752	16.785
2005-08	1.328	7	10.032	390	758	12.515
2005-07	1.373	2	11.154	428	675	13.632
2005-06	1.508	1	11.555	602	736	14.402
2005-05	1.588	0	11.030	697	514	13.829
2005-04	1.627	0	6.840	964	595	10.026
2005-03	1.667	0	4.717	1.077	657	8.118
2005-02	1.474	2	9.227	966	446	12.115

	Antwerpen	Limburg	Oost-Vlaanderen	Vlaams-Brabant	West-Vlaanderen	Totaal
<b>2005-01</b>	1.702	3	9.884	715	330	12.634
<b>2004-12</b>	1.426	6	15.890	620	435	18.377
<b>2004-11</b>	1.484	6	13.055	704	228	15.477
<b>2004-10</b>	1.423	7	5.162	775	190	7.557
<b>2004-09</b>	1.408	6	13.770	573	168	15.925
<b>2004-08</b>	1.467	2	11.782	694	349	14.294
<b>2004-07</b>	1.209	3	10.774	704	490	13.180
<b>2004-06</b>	1.194	1	14.255	617	371	16.438
<b>2004-05</b>	1.185	2	12.263	551	318	14.319
<b>2004-04</b>	1.096	4	336	654	408	2.498
<b>2004-03</b>	1.231	1	2.446	253	397	4.328
<b>2004-02</b>	980	0	4.747	24	360	6.111
<b>2004-01</b>	1.015	0	5.327	36	351	6.729
<b>2003-12</b>	979	2	1.297	24	282	2.584
<b>2003-11</b>	716	7	4.870	21	139	5.753
<b>2003-10</b>	746	11	3.369	16	138	4.280

